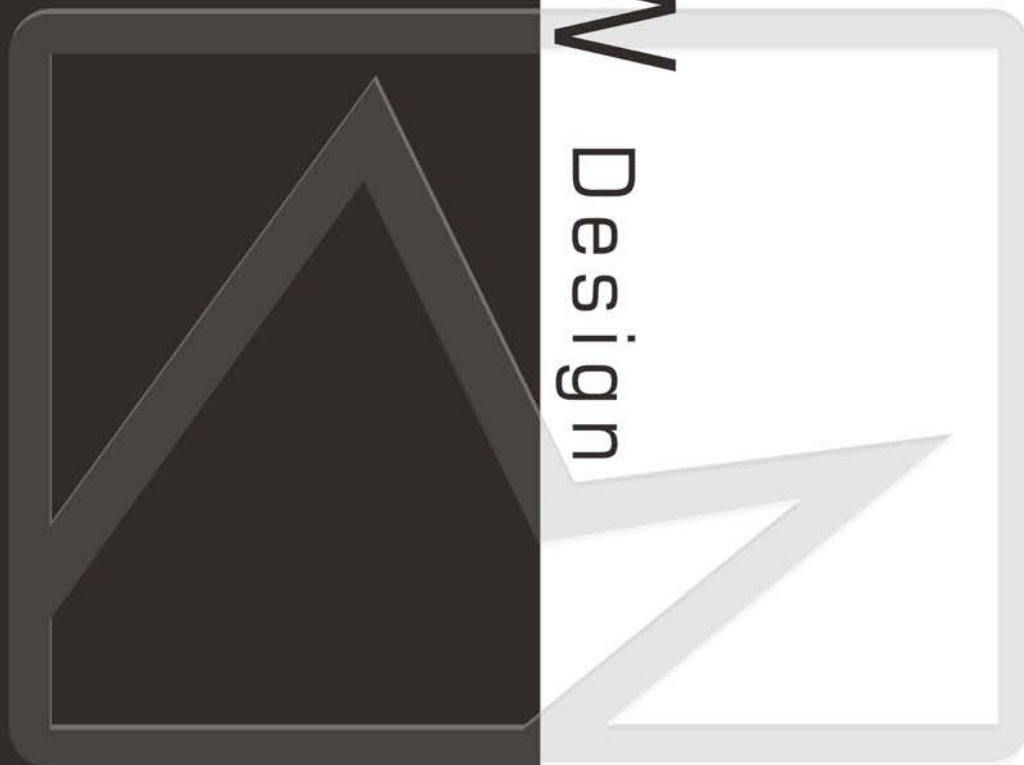


Car Amplifier Professor



SAGA 1991

NEW
Design



2025

Best regards from SAGA to global buyers

SAGAAUDIO establish in 1991, Saga is a Car audio high-tech company integrating R & D, production and sales. It covers a total area of more than 20000 square meters. The company has more than 500 high-quality employees, including 30 development and design engineer, more than 50 quality control personnel, and more than 30 front-line production control personnel. 80% of the production lines are advanced automatic production, such as SMT/AI / automatic welding / automatic welding / Automatic packaging. These automatic mechine not only replace personnel, but also improve product consistency and reduce product failure rate. It can produce 80000pcs Car audio power amplifiers per month and 20000pcs other mobile audio products per month

Our system certification is ISO9001.2015 ITAF16949 QC080000



Chairman Engineer
Mr.Chen
President of Foshan
Electronics Association



Enterprise Natural Endowment

- ✦ Foshan Car Electronic Engineering R & D Centre
- ✦ Guangdong High and New Technology Enterprise
- ✦ Guangdong Non-governmental Science & Technology Enterprise



ISO 9001:2015 CERTIFICATE



ITAF 16949 :2016 CERTIFICATE



Reward By Super Customer

SAGA AUDIO EQUIPMENT CO., LTD

Add: NO. 1. Saga Road. Shashui District. Songgang Town. Nanhai. Foshan City.
Guangdong. P. R. China
Tel: (86-757) 85221723 85238180
Http://www.saga-china.com

Post Code: 528234
E-mail: amplifier@saga-china.com
caramp@saga-china.com

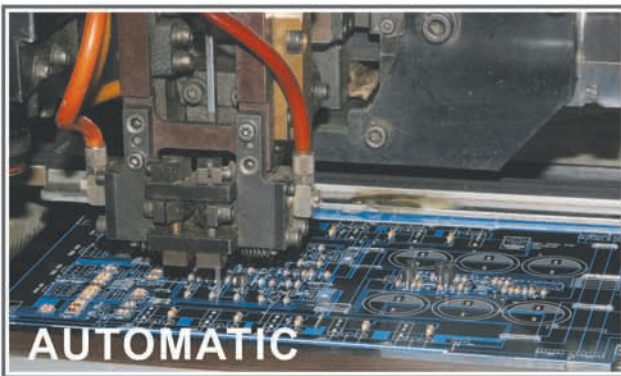
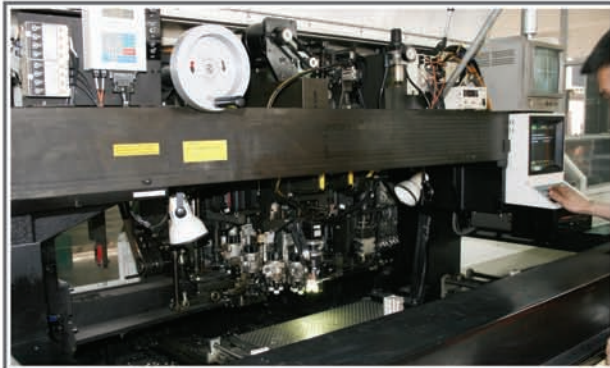


Email QR Code
Welcome your Email !

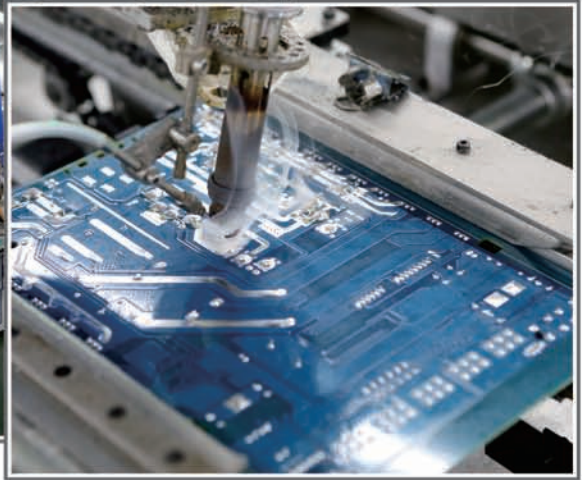
SAGA — 中国汽车功放行业内之规模与实力制造商

The Outstanding Scale And Power Manufacturer In China's Car Amplifier Industry

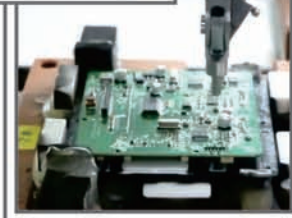
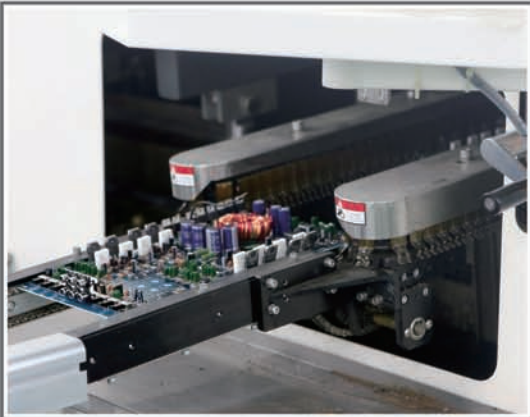
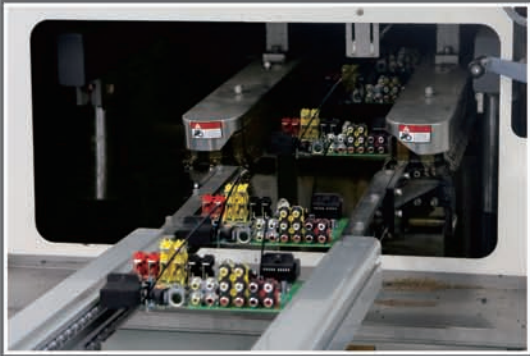
Automatic Equipment



Automatic welding



精益生产 --- 高品质的保证
Lean Production --- High Quality Assurance



Speaker Production Line



Audition Room





NEW Software



DSP-16.12.80



DSP-12.8.80



- * ADI ADSP21488 DSP CHIP
- * Burr-Brown ADC/DAC
- * Opa1652 SQ OPA
- * MA5332M AMP CHIP
- * APTX HD BT CHIP
- * NEW Algorithm Software



Android headunit , phone and PC Can quickly connect to DSP for quick tuning

Specifications

DSP-12.8.80

Dynamic range	≥100dB
S/N (RCA)	>100dB
Noise	High level : 25uVrms; RCA: 25uVrms
Crosstalk	≥80dB
THD&Niose	<0.01%
Input level	High level : 32Vpp; RCA: 8Vpp
Output level	6Vpp
4 -Ohms	8x80W
4 -Ohms	8x130W
2 -Ohms	4x260W
Aux input / output sensitivity (RCA)	1:22
Frequency response	20Hz~ 20kHz
System sampling rate	96kHz/24bit
Input impedance	High level :240Ω; RCA: 15kΩ
Working voltage	9~16V
The static current	≤2.3mA (No power on status)
Standby power	≤0.1W
Input	High level (8CH) , Low Level (2CH)
Output (RCA)	12CH
Boot time	10s
Size of the host(WxHxL)	158mm x 49.5mm x 279mm

Specifications

DSP-16.12.80

Dynamic range	≥100dB
S/N (RCA)	>100dB
Noise	High level : 25uVrms; RCA: 25uVrms
Crosstalk	≥80dB
THD&Niose	<0.01%
Input level	High level : 32Vpp; RCA: 8Vpp
Output level	6Vpp
4 -Ohms	12x80W
4 -Ohms	12x130W
2 -Ohms	6x260W
Aux input / output sensitivity (RCA)	1:22
Frequency response	20Hz~ 20kHz
System sampling rate	96kHz/24bit
Input impedance	High level :240Ω; RCA: 15kΩ
Working voltage	9~16V
The static current	≤2.3mA (No power on status)
Standby power	≤0.1W
Input	High level (8CH) , Low Level (2CH)
Output (RCA)	12CH
Boot time	10s
Size of the host(WxHxL)	158mm x 49.5mm x 279mm

8 CHANNEL DSP ON THE GO



OTG Feature

- * Hi-Res USB Audio
- * USB 2.0 Full Speed 12 MHz
- * 104dB Dynamic Range
- * -95dB THD+N
- * 192KHz/16Bit Samplingrate



iPhone
Android phone
music / charge / Control

LA-8.6.80 OTG



TYPE C TO TYPE C

DSP-8.6.80 OTG



Functions	Specification
High Input	6-20V / 6CH
Low Input	0.6-2V / 2CH
Optical Input	Up To 192 Sampling Rate
Bluetooth	5.0 Version / Support Aptx Hd
Optical Output	NA
Low Output	4v Rms
Remote Control	Support
Output Power4-Ohms	4x80w+4x40w
Output Power2-Ohms	4x125w+4x60w
S/N (A-weight)	>95dB
THD	<0.05%
Dimension(WXHXL)MM:	158x49.5x216 / 230x47x151

specification sheet pls reference to the software instruction page



8 CHANNEL DSP



Automatic switching of special preset modes.

Convertible car roof-open DJ mode



DSP-8.6.80



DSP-8.6.80 USB

Functions	Specification
High Input	6-20V / 6CH
Low Input	0.6-2V / 2CH
Optical Input	Up To 192 Sampling Rate
Bluetooth	5.0 Version / Support Aptx Hd
Optical Output	NA
Low Output	4v Rms
Remote Control	Support
Output Power4-Ohms	6x80w
Output Power2-Ohms	6x125w
PowerBridged 4-Ohms	3x250w
S/N (A-weight)	>95dB
THD	<0.05%
Dimension(WXHXL)MM:	230x47x170

specification sheet pls reference to the software instruction page



DSP-AP6 PRO



KTV IN CAR



DSP WIRELESS MICROPHONE



5.0 HD Bluetooth



SIX PRESETS



Emperor delay position
enhance the on-site experience



Customized DSP CHIP
Exclusive Algorithm



Lossless HIFI



Stereo Surround



Personalized
computer debugging





MD-2002



- Output Power
- 4-Ohms 2x200w
- 2-Ohms 2x300w
- 1-Ohms 2x500w
- Bridged 4-Ohms 1x600w
- S/N (A-weight) >90dB
- THD <0.05%
- Dimension(WXHXL)MM: 140x43x225



MD-80.4

- Output Power
- 4-Ohms 4x80w
- 2-Ohms 4x130w
- Bridged 4-Ohms 2x260w
- S/N (A-weight) >100dB
- THD <0.01%
- Dimension(WXHXL)MM: 140x43x225

MD-1204

- Output Power
- 4-Ohms 4x120w
- 2-Ohms 4x200w
- Bridged 4-Ohms 2x400w
- S/N (A-weight) >100dB
- THD <0.01%
- Dimension(WXHXL)MM: 140x43x225



MD-10001

MD-8001

- Output Power
- 4-Ohms 1x600w
- 2-Ohms 1x900w
- 1-Ohms 1x1100w
- S/N (A-weight) >101dB
- THD <0.02%
- Dimension(WXHXL)MM: 140x43x225

- Output Power
- 4-Ohms 1x400w
- 2-Ohms 1x650w
- 1-Ohms 1x800w
- S/N (A-weight) >101dB
- THD <0.02%
- Dimension(WXHXL)MM: 140x43x225





MS-4150

- Output Power
- 4-Ohms 4x150w
- 2-Ohms 4x225w
- Bridged 4-Ohms 2x450w
- S/N (A-weight) >100dB
- THD <0.01%
- Dimension(WXHXL)MM:
258.2x56x158



MS-4120

- Output Power
- 4-Ohms 4x120w
- 2-Ohms 4x180w
- Bridged 4-Ohms 2x360w
- S/N (A-weight) >100dB
- THD <0.01%
- Dimension(WXHXL)MM:
258.2x56x138



MS-11500



- Output Power
- 4-Ohms 1x800w
- 2-Ohms 1x1300w
- 1-Ohms 1x1500w
- S/N (A-weight) >101dB
- THD <0.02%
- Dimension(WXHXL)MM:
258.2x56x173





MX-2200



- Output Power
- 4-Ohms 2x200w
- 2-Ohms 2x300w
- 1-Ohms 2x500w
- Bridged 4-Ohms 1x600w
- S/N (A-weight) >90dB
- THD <0.05%
- Dimension(WXHXL)MM:
223x49x133



MX-450

- Output Power
- 4-Ohms 4x50w
- 2-Ohms 4x75w
- Bridged 4-Ohms 2x100w
- S/N (A-weight) >100dB
- THD <0.01%
- Dimension(WXHXL)MM:
223x49x110

MX-480

- Output Power
- 4-Ohms 4x80w
- 2-Ohms 4x130w
- Bridged 4-Ohms 2x260w
- S/N (A-weight) >100dB
- THD <0.01%
- Dimension(WXHXL)MM:
223x49x150



MX-10001 **MX-1750**

- Output Power
- 4-Ohms 1x600w
- 2-Ohms 1x900w
- 1-Ohms 1x1100w
- S/N (A-weight) >101dB
- THD <0.02%
- Dimension(WXHXL)MM:
223x49x147

- Output Power
- 4-Ohms 1x400w
- 2-Ohms 1x650w
- 1-Ohms 1x800w
- S/N (A-weight) >101dB
- THD <0.02%
- Dimension(WXHXL)MM:
223x49x127





MP-2200



- Output Power
- 4-Ohms 2x200w
- 2-Ohms 2x300w
- 1-Ohms 2x500w
- Bridged 4-Ohms 1x600w
- S/N (A-weight) >90dB
- THD <0.05%
- Dimension(WXHXL)MM:
155x50x220



MP-2300

- Output Power
- 4-Ohms 2x300w
- 2-Ohms 2x450w
- 1-Ohms 2x700w
- Bridged 4-Ohms 1x900w
- S/N (A-weight) >90dB
- THD <0.05%
- Dimension(WXHXL)MM:
155x50x200

MP-480

- Output Power
- 4-Ohms 4x80w
- 2-Ohms 4x130w
- Bridged 4-Ohms 2x260w
- S/N (A-weight) >100dB
- THD <0.01%
- Dimension(WXHXL)MM:
155x50x200



MP-4200

- Output Power
- 4-Ohms 4x200w
- 2-Ohms 4x300w
- Bridged 4-Ohms 2x600w
- S/N (A-weight) >100dB
- THD <0.01%
- Dimension(WXHXL)MM:
155x50x220

MP-11000



- Output Power
- 4-Ohms 1x600w
- 2-Ohms 1x900w
- 1-Ohms 1x1100w
- S/N (A-weight) >101dB
- THD <0.02%
- Dimension(WXHXL)MM:
155x50x220



MP-11500

- Output Power
- 4-Ohms 1x800w
- 2-Ohms 1x1300w
- 1-Ohms 1x1500w
- S/N (A-weight) >101dB
- THD <0.02%
- Dimension(WXHXL)MM:
155x50x260



MI-80.4

- Output Power
- 4-Ohms 4x80w
- 2-Ohms 4x120w
- Bridged 4-Ohms 2x240w
- S/N (A-weight) >100dB
- THD <0.01%
- Dimension(WXHXL)MM:
114x51.5x160



MI-1000.1

- Output Power
- 4-Ohms 1x500w
- 2-Ohms 1x700w
- 1-Ohms 1x1000w
- S/N (A-weight) >101dB
- THD <0.02%
- Dimension(WXHXL)MM:
114x51.5x240



MI-500.1

- Output Power
- 4-Ohms 1x250w
- 2-Ohms 1x350w
- 1-Ohms 1x500w
- S/N (A-weight) >101dB
- THD <0.02%
- Dimension(WXHXL)MM:
114x51.5x200



ALL DOUBLE-SIDED PCB MORE STABLE

ALL HIGH PRECISION SMT DEVICE

ALL SUFFICIENT POWER

ALL ATTRACTIVE PRICE

2x50W



2x75W



1x500W



1x1000W



4x60W



4x100W



**WELCOME TO CUSTOMIZE THE HOUSING
YOU LIKE AND USE THE ABOVE PCB**



M213-80.4

4 x **RMS**
120W
20HM STABLE



M213-100.4

4 x **RMS**
150W
20HM STABLE



Model#	TYPE	4 Ohms	2 Ohms	1 Ohms	Mono Bridged @4 Ohms	Dimension(WxHxL)
M213-60.2	AB	2x60	2x90	N/A	1x120	250x62x180
M213-60.4	AB	4x60	4x90	N/A	2x120	250x62x298
M213-80.4	AB	4x80	4x120	N/A	2x160	250x62x320
M213-100.4	AB	4x100	4x150	N/A	2x200	250x62x360
M213-1000.1	D	1x1000	1x1500	1x2000	N/A	250x62x250

M214-80.4

4 x **RMS**
120W
20HM STABLE



M214-100.4

4 x **RMS**
150W
20HM STABLE



Model#	TYPE	4 Ohms	2 Ohms	1 Ohms	Mono Bridged @4 Ohms	Dimension(WxHxL)
M214-60.2	AB	2x60	2x90	N/A	1x120	250x50.4x180
M214-60.4	AB	4x60	4x90	N/A	2x120	250x50.4x298
M214-80.4	AB	4x80	4x120	N/A	2x160	250x50.4x320
M214-100.4	AB	4x100	4x150	N/A	2x200	250x50.4x360
M214-1000.1	D	1x1000	1x1500	1x2000	N/A	250x50.4x250

M215-80.4

4 x 120W
RMS
20HM STABLE



Model#	TYPE	4 Ohms	2 Ohms	1 Ohms	Mono Bridged @4 Ohms	Dimension(WxHxL)
M215-60.2	AB	2x60	2x90	N/A	1x120	249.5x55x180
M215-60.4	AB	4x60	4x90	N/A	2x120	249.5x55x298
M215-80.4	AB	4x80	4x120	N/A	2x160	249.5x55x320
M215-100.4	AB	4x100	4x150	N/A	2x200	249.5x55x360
M215-1000.1	D	1x1000	1x1500	1x2000	N/A	249.5x55x250

M217-1000.1

1 x **RMS**
1500W
20HM STABLE



M217-100.4

4 x **RMS**
150W
20HM STABLE



Model#	TYPE	4 Ohms	2 Ohms	1 Ohms	Mono Bridged @4 Ohms	Dimension(WxHxL)
M217-60.2	AB	2x60	2x90	N/A	1x120	236x55x180
M217-60.4	AB	4x60	4x90	N/A	2x120	236x55x298
M217-80.4	AB	4x80	4x120	N/A	2x160	236x55x320
M217-100.4	AB	4x100	4x150	N/A	2x200	236x55x360
M217-1000.1	D	1x1000	1x1500	1x2000	N/A	236x55x250

M220-60.2

2 x RMS 90W 20HM STABLE



M220-60.4

4 x RMS 90W 20HM STABLE



Model#	TYPE	4 Ohms	2 Ohms	1 Ohms	Mono Bridged @4 Ohms	Dimension(WxHxL)
M220-60.2	AB	2x60	2x90	N/A	1x120	236x55x180/230
M220-60.4	AB	4x60	4x90	N/A	2x120	236x55x298/348
M220-80.4	AB	4x80	4x120	N/A	2x160	236x55x320/370
M220-100.4	AB	4x100	4x150	N/A	2x200	236x55x360/410
M220-1000.1	D	1x1000	1x1500	1x2000	N/A	236x55x250/300



M224-40.4

4 x RMS 60W 20HM STABLE



M224-100.4

4 x RMS 150W 20HM STABLE



Model#	TYPE	4 Ohms	2 Ohms	1 Ohms	Mono Bridged @4 Ohms	Dimension(WxHxL)
M224-60.2	AB	2x60	2x90	N/A	1x120	236x55x180
M224-40.4	AB	4x40	4x60	N/A	2x80	236x55x260
M224-80.4	AB	4x80	4x120	N/A	2x160	236x55x320
M224-100.4	AB	4x100	4x150	N/A	2x200	236x55x360
M224-1000.1	D	1x1000	1x1500	1x2000	N/A	236x55x250



M225-1000.1

1 x 1500W
RMS
20HM STABLE



M225-60.4

4 x 90W
RMS
20HM STABLE



Model#	TYPE	4 Ohms	2 Ohms	1 Ohms	Mono Bridged @4 Ohms	Dimension(WxHxL)
M225-60.2	AB	2x60	2x90	N/A	1x120	229.4x51.8x180/230
M225-60.4	AB	4x60	4x90	N/A	2x120	229.4x51.8x298/348
M225-80.4	AB	4x80	4x120	N/A	2x160	229.4x51.8x320/370
M225-100.4	AB	4x100	4x150	N/A	2x200	229.4x51.8x360/410
M225-1000.1	D	1x1000	1x1500	1x2000	N/A	229.4x51.8x250/300



M228-60.2

2 x **RMS 90W**
20HM STABLE



M228-60.4

4 x **RMS 90W**
20HM STABLE



Model#	TYPE	4 Ohms	2 Ohms	1 Ohms	Mono Bridged @4 Ohms	Dimension(WxHxL)
M228-60.2	AB	2x60	2x90	N/A	1x120	226x51x180
M228-60.4	AB	4x60	4x90	N/A	2x120	226x51x298
M228-80.4	AB	4x80	4x120	N/A	2x160	226x51x320
M228-100.4	AB	4x100	4x150	N/A	2x200	226x51x360
M228-1000.1	D	1x1000	1x1500	1x2000	N/A	226x51x250

M229-60.2

2 x RMS 90W 20HM STABLE



M229-60.4

4 x RMS 90W 20HM STABLE



Model#	TYPE	4 Ohms	2 Ohms	1 Ohms	Mono Bridged @4 Ohms	Dimension(WxHxL)
M229-60.2	AB	2x60	2x90	N/A	1x120	229.4x51.8x180
M229-60.4	AB	4x60	4x90	N/A	2x120	229.4x51.8x298
M229-80.4	AB	4x80	4x120	N/A	2x160	229.4x51.8x320
M229-100.4	AB	4x100	4x150	N/A	2x200	229.4x51.8x360
M229-1000.1	D	1x1000	1x1500	1x2000	N/A	229.4x51.8x250

R8.2

200 WATTS RMS

Install under the passenger seat



Amplifier Specifications	R8.2
Max. Output Power @2 ohms	200W*1
Amplifier Technology	Class D
PCB Board Layer	4 Layers
Inputs	Low Input / High Input
Input Sensitivity	0.2-8V/1.4-22V
Input Impedance	9K/100Ω
speaker impedance	2Ω
Frequency Response	34-214K hz
Bass boost	5-12 DB
Highpass	NA
Lowpass	80-214 hz
Total Harmonic Distortion(THD)	0.01%
Signal-to-Noise Ratio	90 dB
Damping Factor	65
Operating Voltage	9-16V
Max. Current Draw	12A
Idling Current	0.95A
Heatsink Material	Die-cast
Dimensions	ED:248mm H:78mm(8")
Net Weight	3.8KG

N7

150 WATTS RMS

N6

100 WATTS RMS



Install under the passenger seat



Amplifier Specifications	N6	N7
Max. Output Power @2 ohms	100W*1	150W*1
Amplifier Technology	Class AB	Class AB
PCB Board Layer	2 Layers	2 Layers
Inputs	Low Input / High Input	Low Input / High Input
Input Sensitivity	0.2-8V/1.4-22V	0.2-8V/1.4-22V
Input Impedance	9K/100Ω	9K/100Ω
speaker impedance	2Ω	4Ω
Frequency Response	34-214K hz	34-214K hz
Bass boost	5-12 DB	5-12 DB
Highpass	NA	NA
Lowpass	80-214 hz	80-214 hz
Total Harmonic Distortion(THD)	0.01%	0.01%
Signal-to-Noise Ratio	90 dB	90 dB
Damping Factor	65	65
Operating Voltage	9-16V	9-16V
Current Draw	12A	12A
Power Input	0.95A	0.95A
HeatSink Material	Die-cast	Die-cast
Dimensions	L:285xW:205xH:70MM	L:285xW:205xH:80MM
Net Weight	3.2KG	3.5KG

F802

SPECIFICATIONS

Max Output power: 1200W

Frequency Response: 34Hz-214KHz

Low pass: 50Hz-200Hz

Operating Voltage: 9-16V

S/N: ≥90dB

Size: 280x230x230 mm



IT SOUNDS MORE MOVING



XQ-X6.2

Flat 2 Way passive system
4Ω 45W RMS / 90W MAX 90dB
Freq.response 60 - 23000 Hz
165mm / 6.5" midwoofer
25mm / 1" softdome tweeter

XQ-Y6.2

Flat 2 Way passive system
4Ω 50W RMS / 100W MAX 91dB
Freq.response 55 - 20000 Hz
165mm / 6.5" midwoofer
25mm / 1" softdome tweeter



XQ-Z6.2

Flat 2 Way passive system
4Ω 60W RMS / 120W MAX 92dB
Freq.response 60 - 23000 Hz
165mm / 6.5" midwoofer
25mm / 1" softdome tweeter

**MID****RD3**

Subwoofer Horn :

3Ω 20W RMS / 40W MAX 85dB

Freq.response 180 - 15000 Hz

92mm / 3" Midrange

XQ-401C

Subwoofer Horn :

4Ω 20W RMS / 40W MAX 87dB

Freq.response 80 - 20000 Hz

102mm / 4" Midrange

**FULL****MID / CENTER****CS25**

Subwoofer Horn :

4Ω 20W RMS / 40W MAX 88dB

Freq.response 300 - 20000 Hz

64mm / 2.5" Midrange

TWE**XQ-2021T**

Subwoofer Horn :

4Ω 10W RMS / 20W MAX 90dB

Freq.response 1.5 - 23000 Hz

20mm / 1" Midrange

MID / TWE**CS.2**

Subwoofer Horn :

4Ω 50W RMS / 100W MAX 90dB

Freq.response 300 - 20000 Hz

25mm / 1" Midrange

FD62



Flat 2 Way passive system
4Ω 60W RMS / 120W MAX 92dB
Freq.response 65 - 23000 Hz
165mm / 6.5" midwoofer
25mm / 1" softdome tweeter



HD62



Flat 2 Way passive system
4Ω 60W RMS / 120W MAX 92dB
Freq.response 65 - 23000 Hz
165mm / 6.5" midwoofer
25mm / 1" softdome tweeter

DA62



Flat 2 Way passive system
4Ω 60W RMS / 120W MAX 92dB
Freq.response 65 - 23000 Hz
180mm / 6.5" midwoofer
25mm / 1" softdome tweeter



DA6C



Flat 2 Way passive system
4Ω 60W RMS / 120W MAX 92dB
Freq.response 65 - 20000 Hz
146mm / 6" midwoofer
20.4mm / 1" softdome tweeter



MB-11S

420W

420W Max Power
Outstanding max power

120mm

120mm 120mm in Height
Thin die-cast enclosure design



Space Saving
Fits 15" & above spare tire



Easy Installation
Easy to handle & space efficient

ACTIVE SUBWOOFER MB-11S

Subwoofer • Speaker Size : 11" Diameter

- Impedance : (4+4) Ohms
- Sensitivity (1W/1m) : 85dB
- Cone Composition : Injected PP
- Magnet Type : Ferrite
- Enclosure Housing Material : Aluminum
- Enclosure Dimension (L x W x H) : 360 x 360 x 120mm
- Enclosure Net Weight : 7.4kg (Without Accessories)

Amplifier

- Amplifier Technology : D Class
- Normal Output Power (RMS) : 320W
- Max. Output Power : 420W
- Signal / Noise Ratio : >90dB
- Frequency Response : 20Hz - 150 Hz
- Low Pass Filter (LPF) : 50Hz - 150Hz
- Voltage: 12V (10V-14V)
- Phase Switch : 0 deg / 180 deg
- Automatic On/Off : High Level Only
- Fuse Rating : 30A
- THD: <0.4%
- Variable Bass Boost : 0 - 12dB
- Thermal Short & Overload Protection



marriola®



本彩册内的产品设计属于SAGA的原创与独创,部分已专利注册,属于SAGA公司版权所有,若有仿冒或抄袭类似,SAGA公司将会诉诸法律并且予以相应的追究。

The product designs in this catalogue are the original creation by SAGA. Some have patent registrations and the copyrights are reserved by SAGA Audio Equipment Co., Ltd. We will investigate and affix the appropriate responsibility for anycopy or plagiarism till institute an action at law.

SAGA AUDIO EQUIPMENT CO., LTD

Add: NO. 1. Saga Road, Shashui District, Songgang Town, Nanhai, Foshan City, Guangdong, P. R. China

Post Code: 528234

Tel: (86-757) 85221723 85238180

E-mail: amplifier@saga-china.com

export@saga-china.com

[Http://www.saga-china.com](http://www.saga-china.com)

[saga-china.com](http://www.saga-china.com)



雙
贏